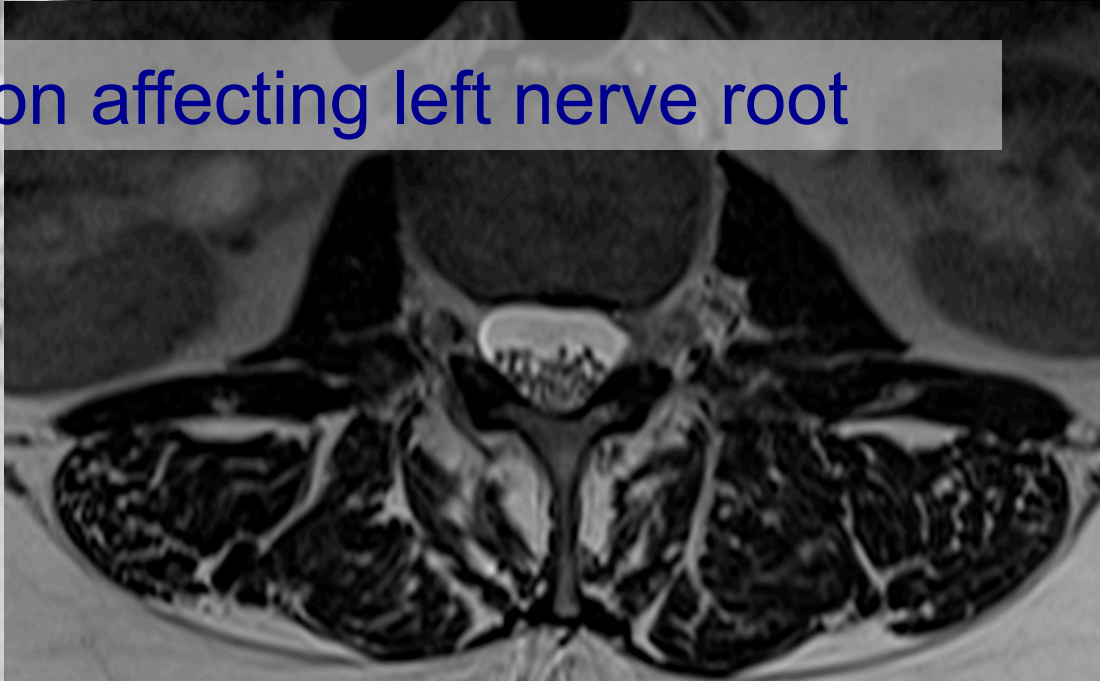


# MRI: LSP Disc herniation affecting left nerve root

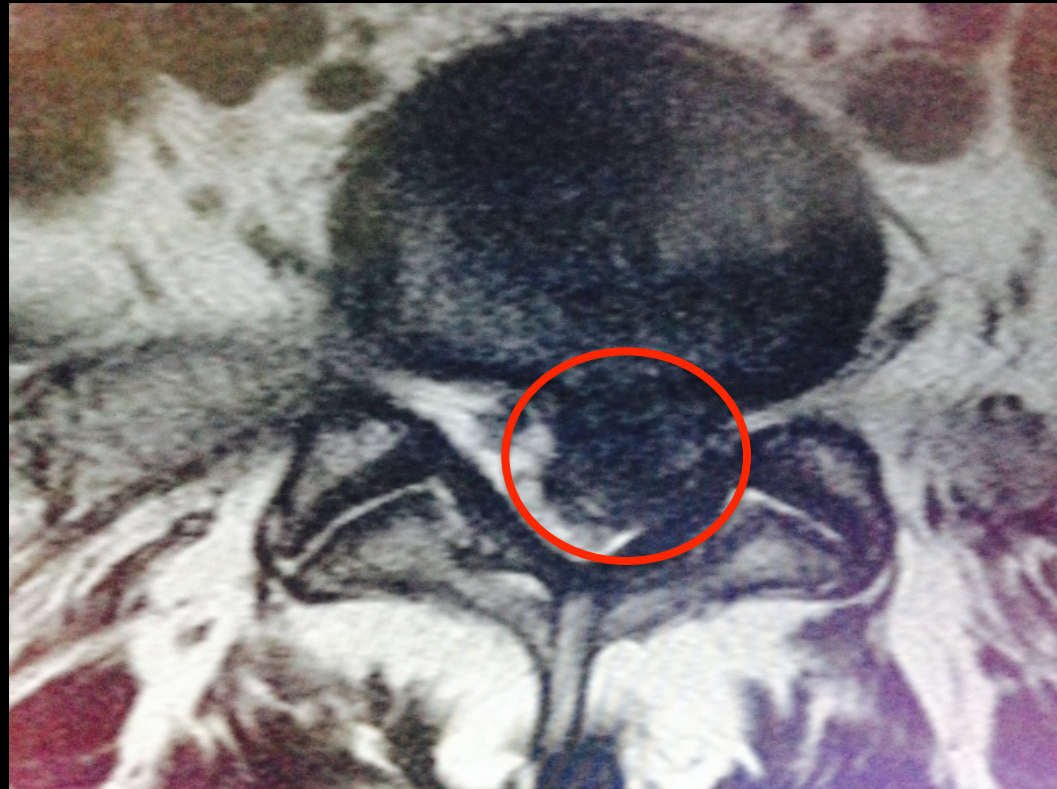


# MRI: LSP Disc herniation affecting right nerve root

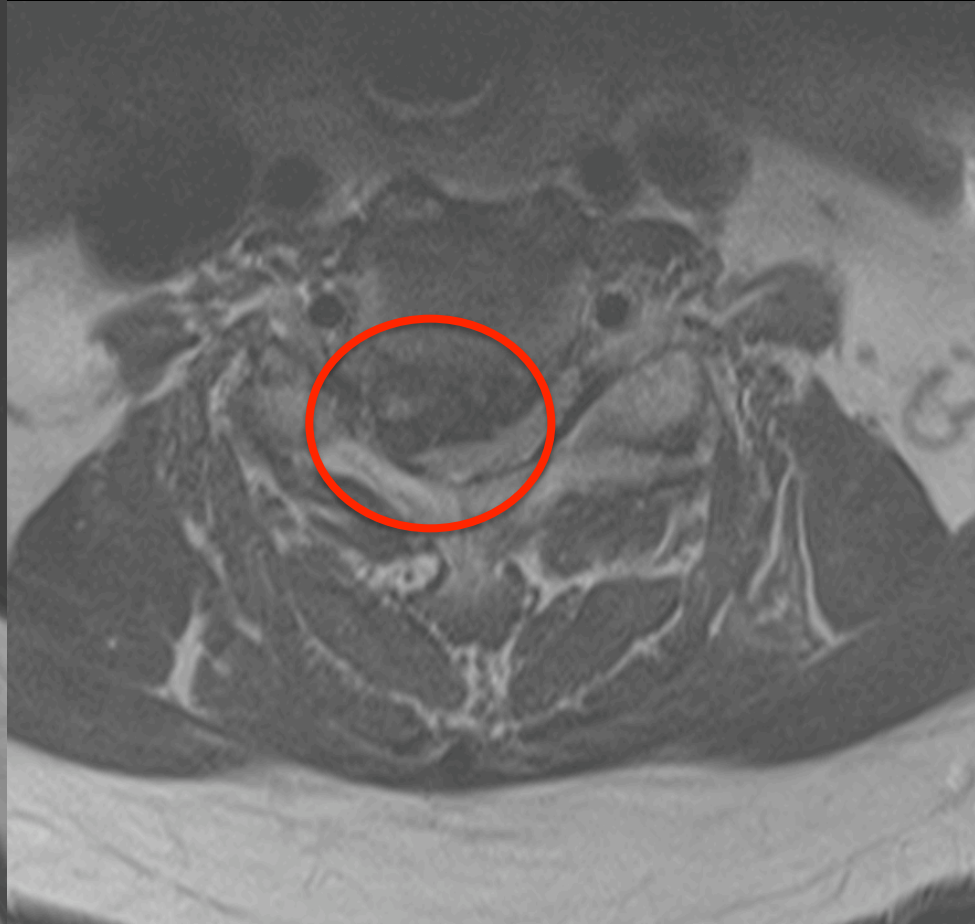




# MRI: Large LSP Disc bulge. Mostly on left



# MRI: CSP Disc herniation compressing cord

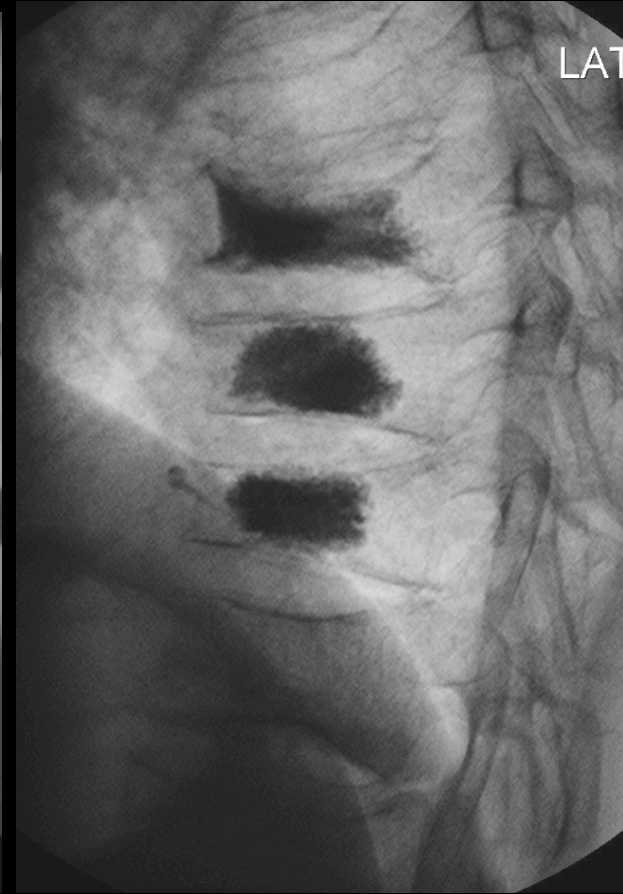
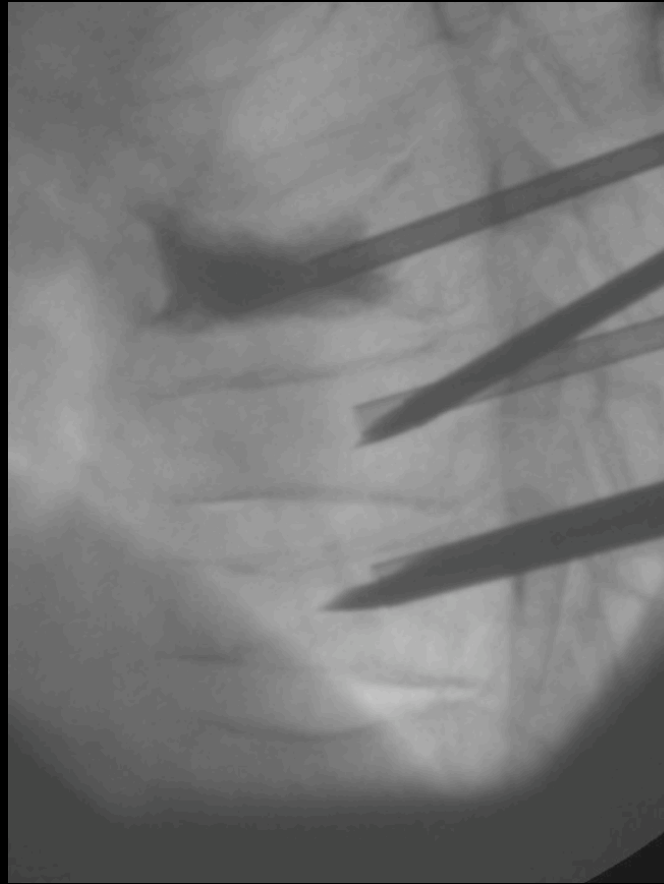
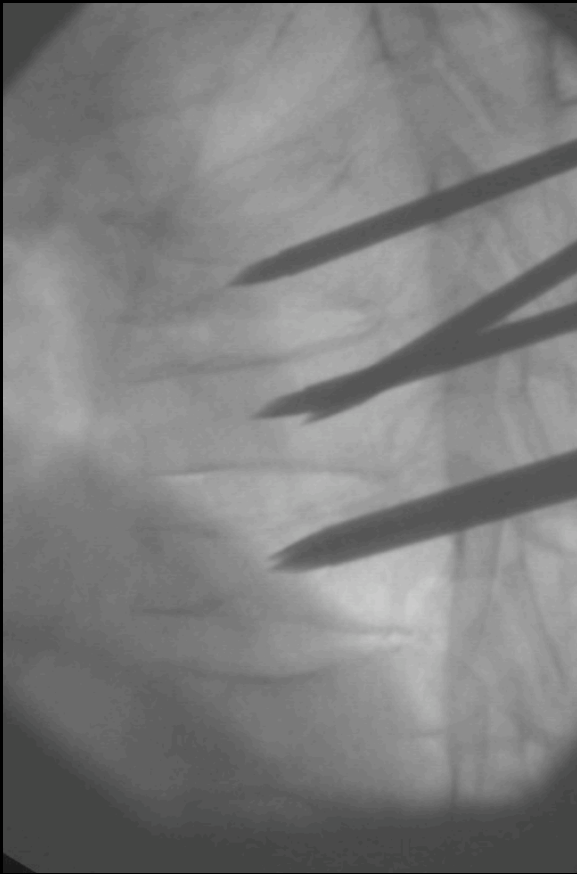




# Aortic Aneurysm

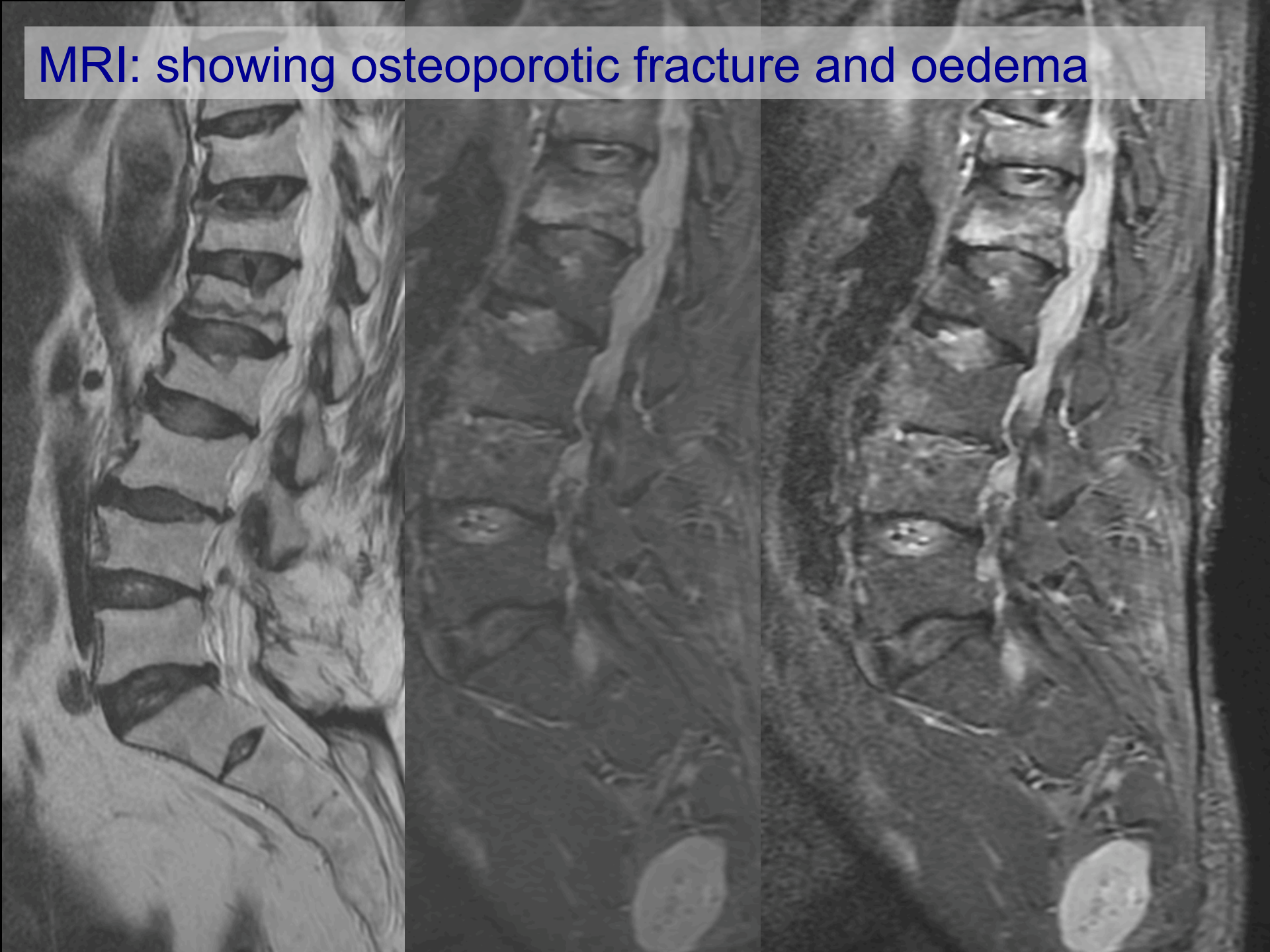


# Fluoroscopy: showing needles for vertebroplasty

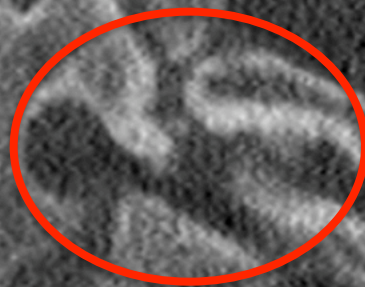




MRI: showing osteoporotic fracture and oedema

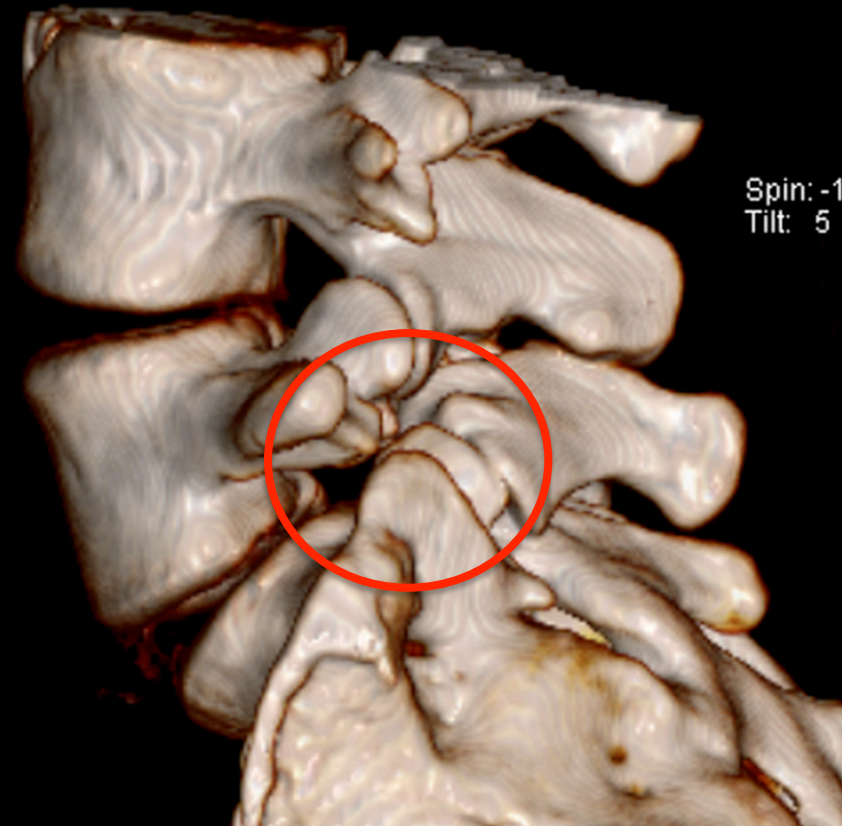
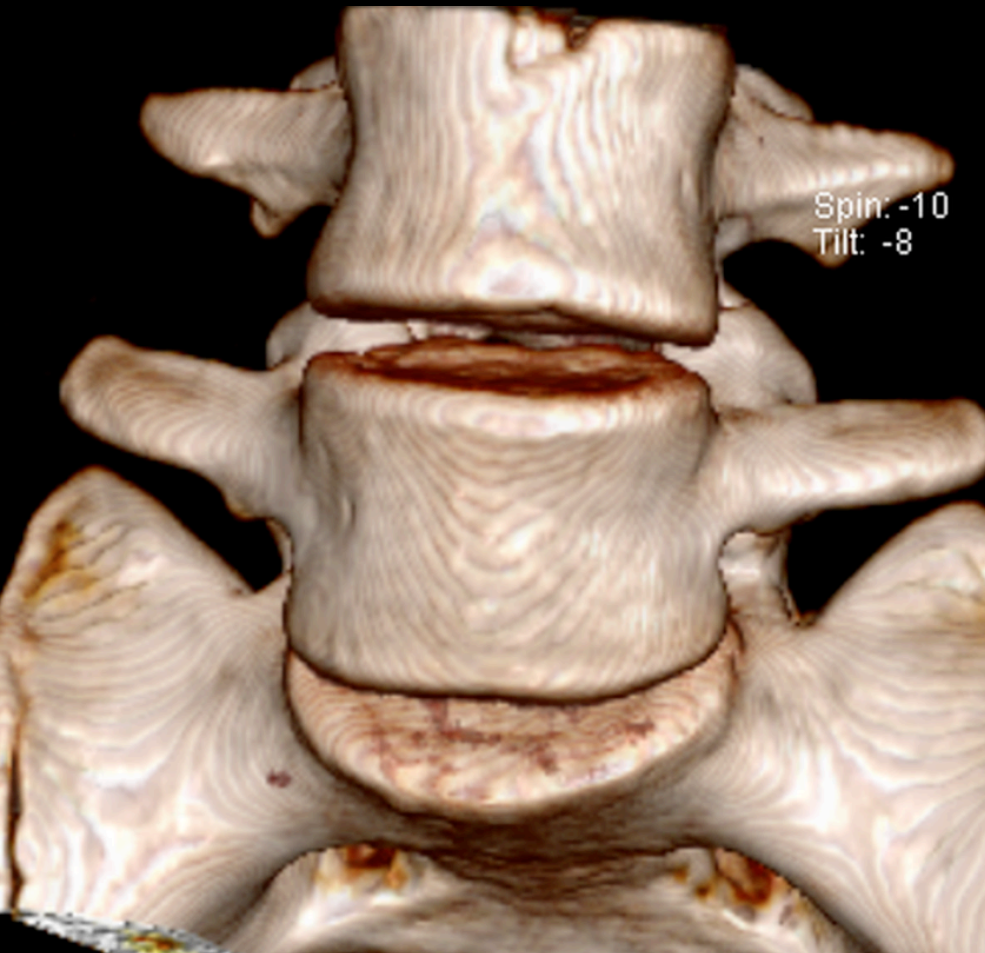


CT: showing pars defect





## CT – 3D Render: showing pars defect



CT: showing pars defect unlikely to be revealed by plain X-ray

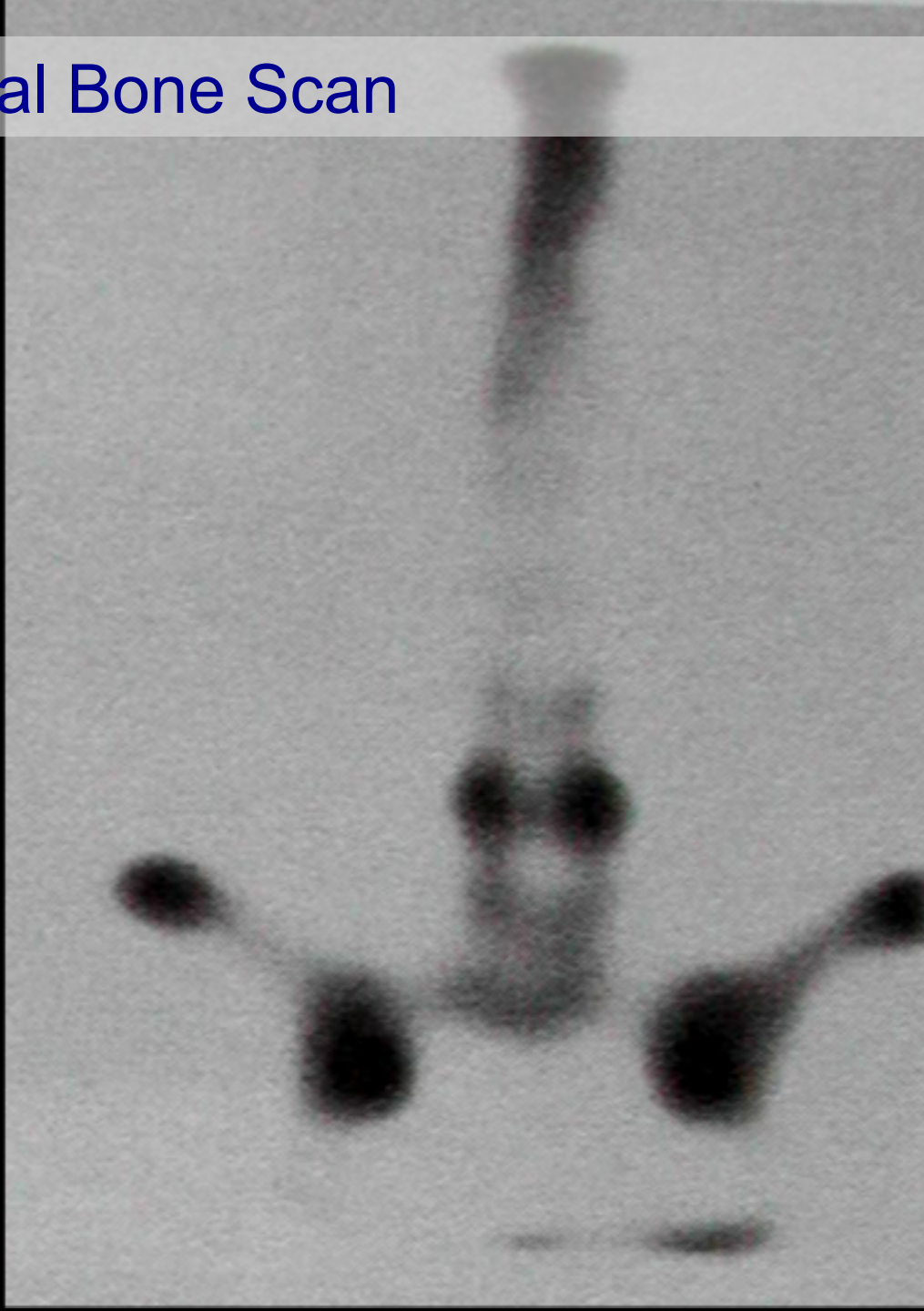




# MRI: T1 and STIR images

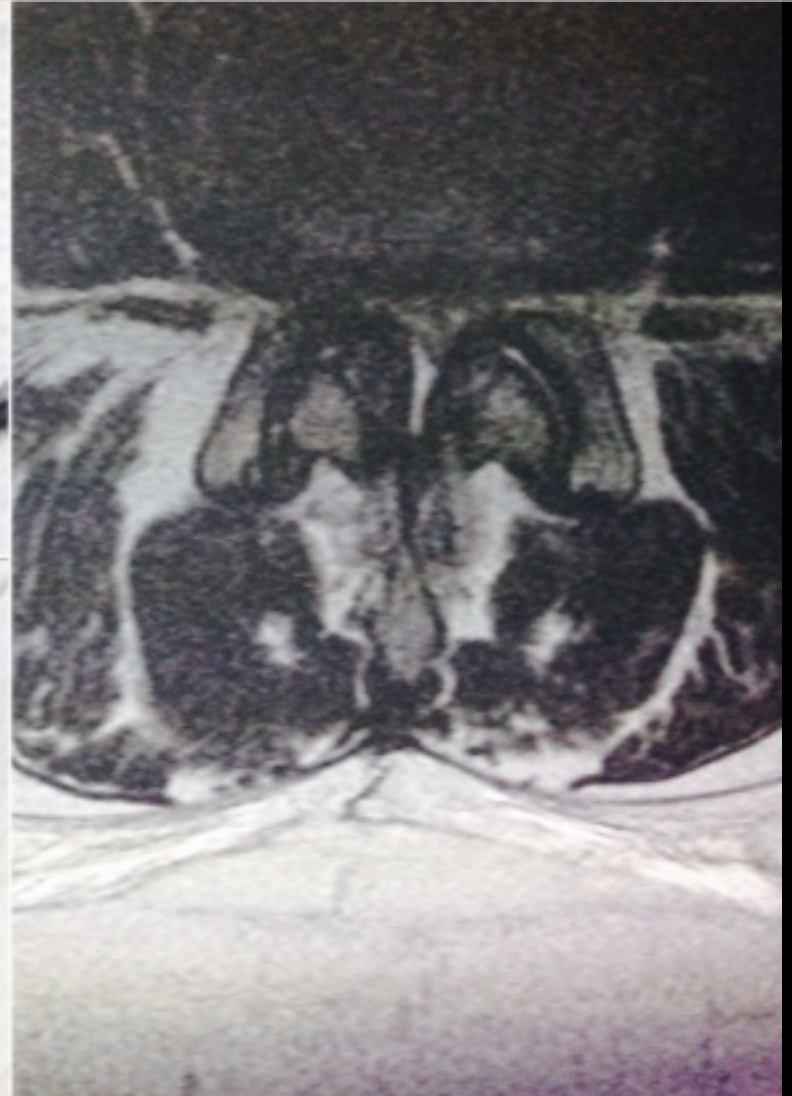
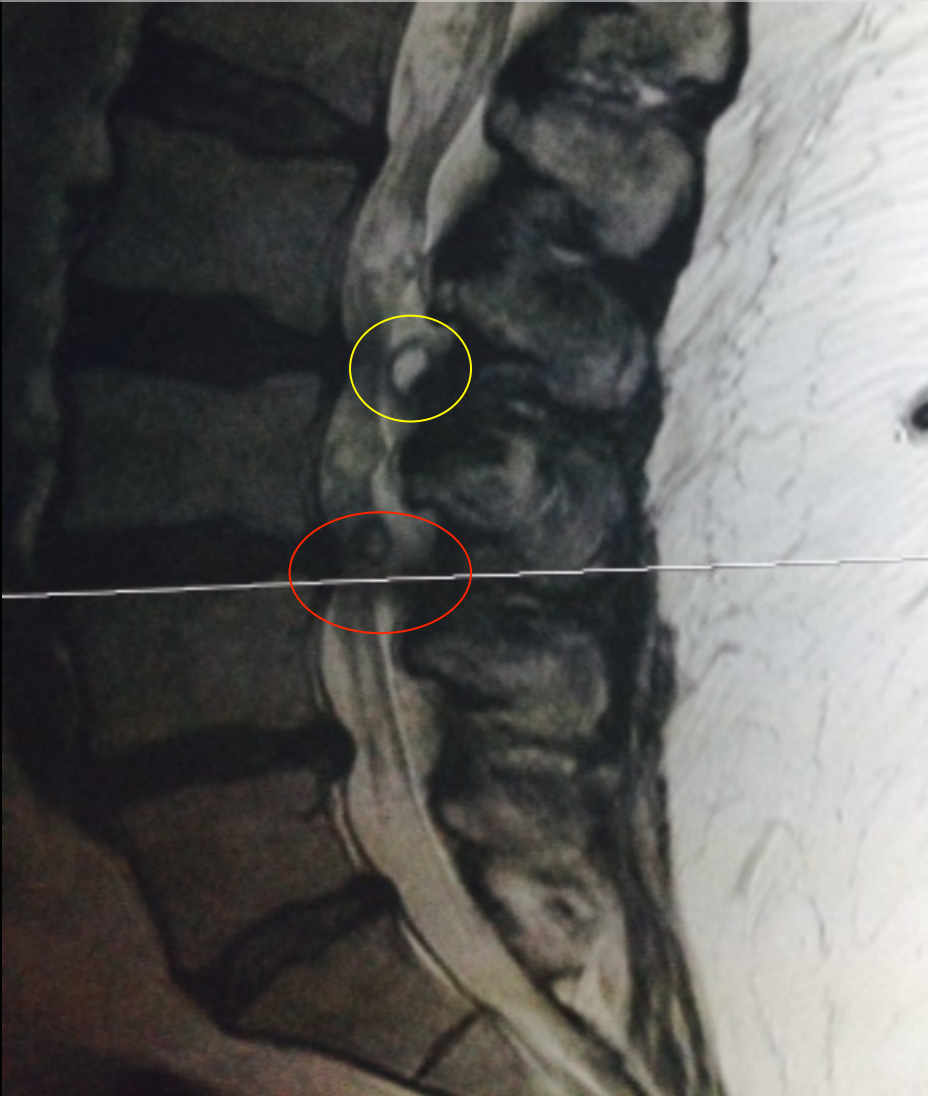


# Traditional Bone Scan

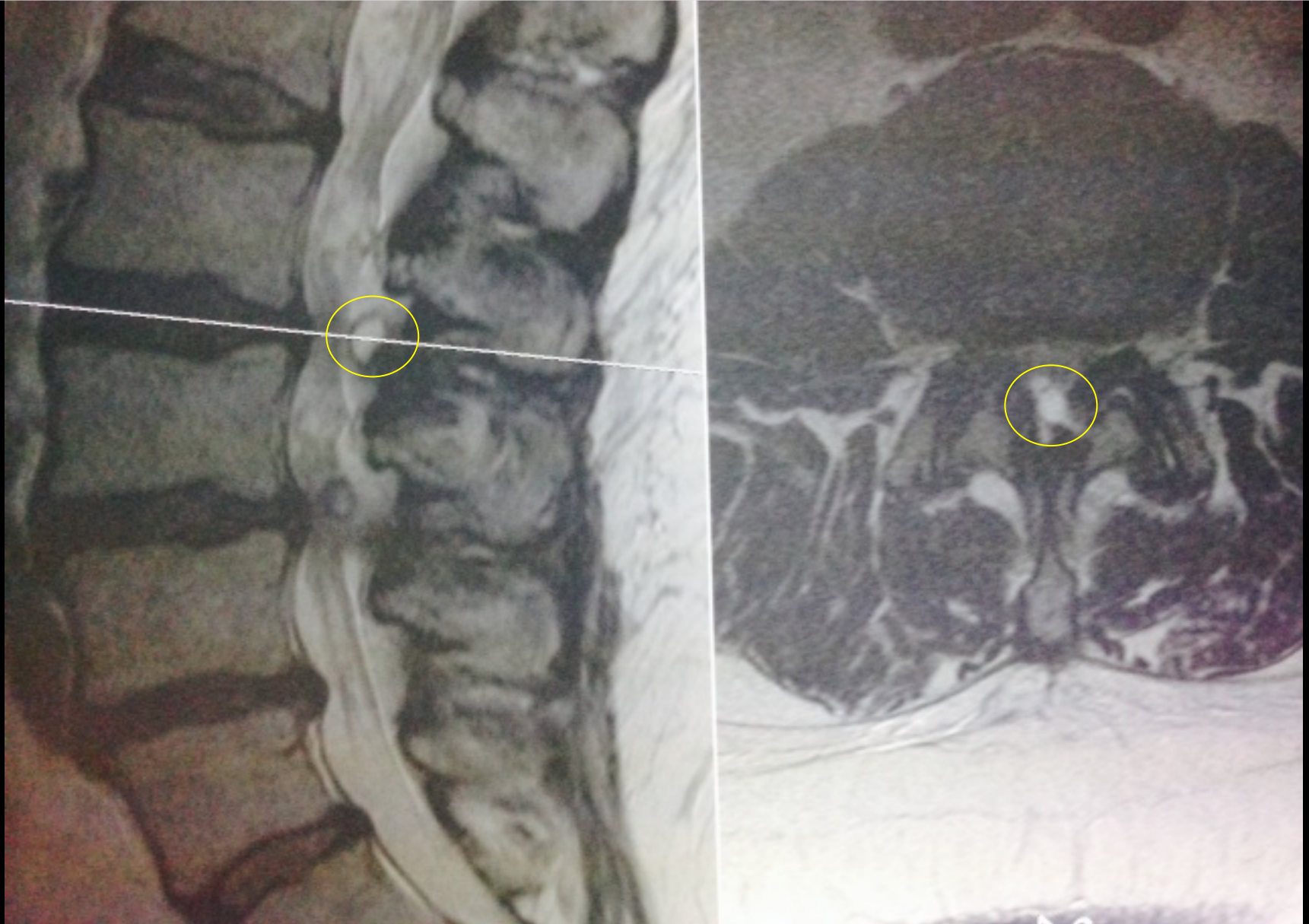




MR: narrowing of canal (red) and facet joint cyst (yellow). Axial image of narrowed canal.

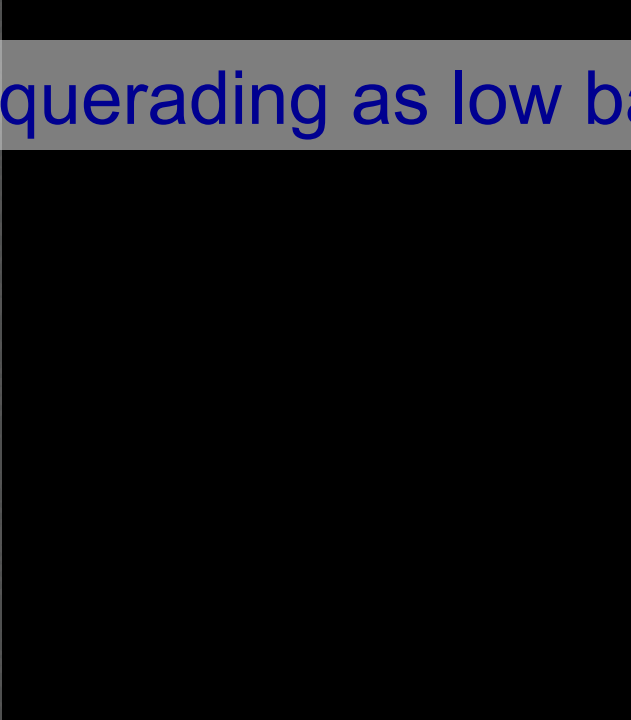
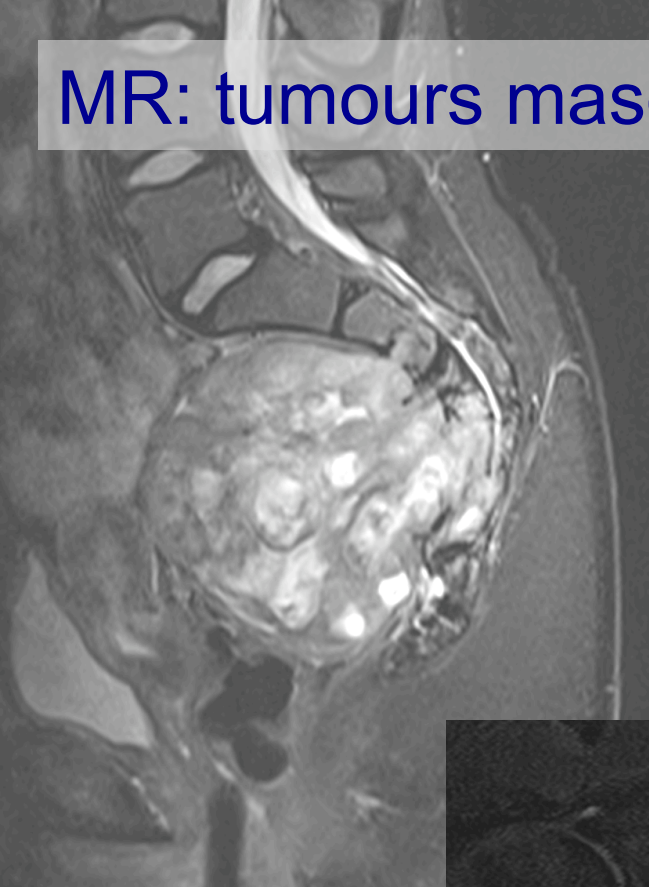


## MR: facet joint cyst (circled) with axial image

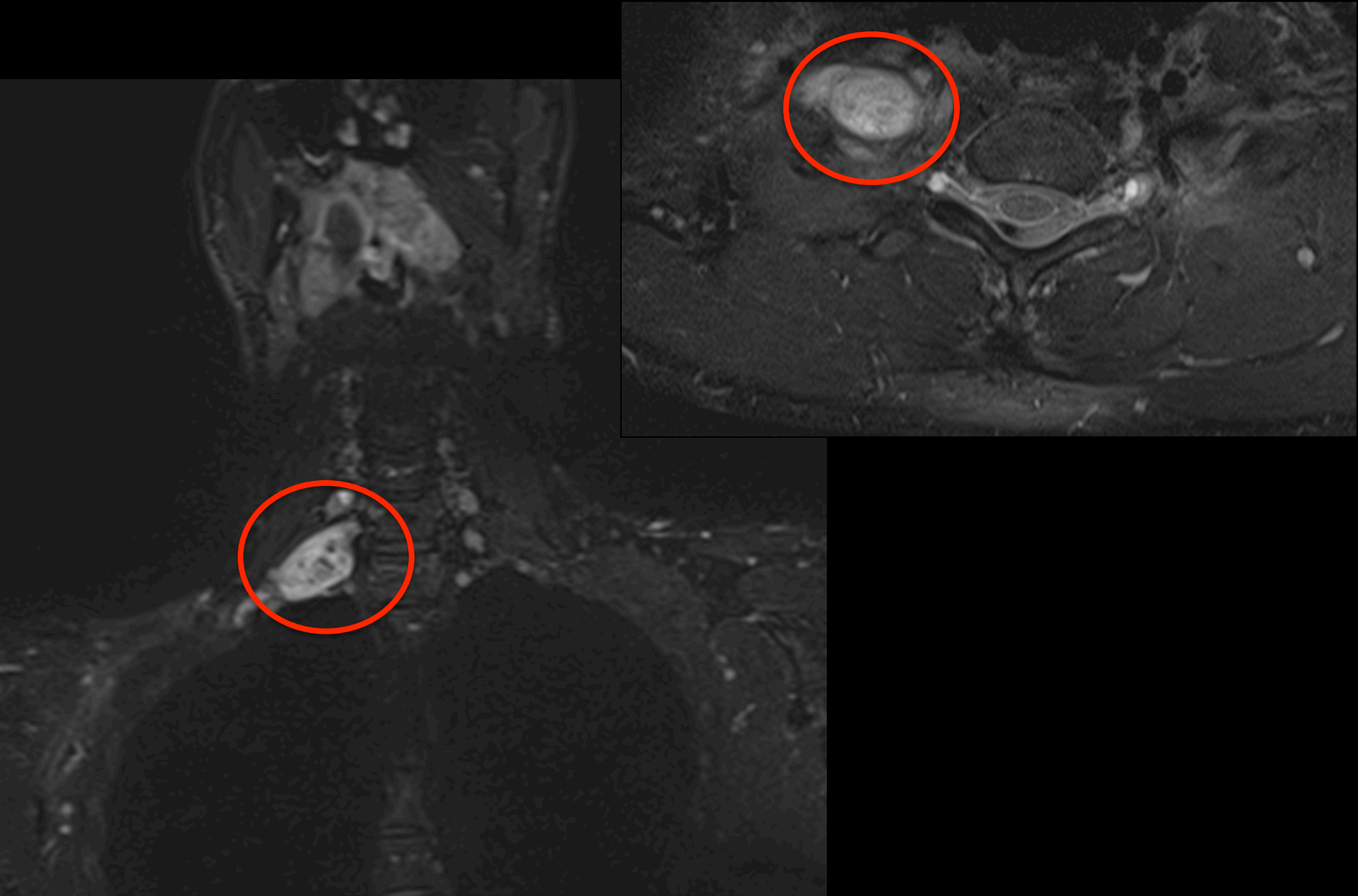




# MR: tumours masquerading as low back pain



## MR: CSP tumour producing nerve pain





MR (STIR Sequence): infection (TB) producing low back pain

