

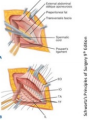
1

The evolution of hernia repair



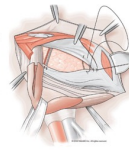
BASSINI REPAIR

- Suture approximate reflection of inguinal ligament (Poupart's) to the transversus abdominis aponeurosis/ligament tendon
- Major Components:
 - Division of the external oblique aponeurosis
 - Division of the cremaster muscle
 - Division of the floor or posterior wall of the inguinal canal
 - High ligation of an indirect sac
 - Reconstruction of the posterior wall

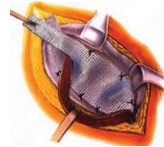


Shouldice Repair

- 2 layers
- A continuous running suture re-approximates the inguinal floor
- A second layer is started near the internal ring, approximating the internal oblique muscle and the transversus abdominis to a band of external oblique aponeurosis superficial and parallel to Poupart's ligament
- This suture line ends at the pubic crest
- A fourth suture line may be added



Lichtenstein Repair



108 HARLEY STREET

	Breast		Skin		Gilmore's Groin & Hernia
	Sports Injury		Vascular		Women's Health
	Rectal		X-Ray & Imaging		Day Surgery

1

2

The Newton-Bendavid First Law of Statistics



"For every statistic quoted in the surgical literature there will be An equal and opposite statistic reported in the same literature!"



108 HARLEY STREET

	Breast		Skin		Gilmore's Groin & Hernia
	Sports Injury		Vascular		Women's Health
	Rectal		X-Ray & Imaging		Day Surgery

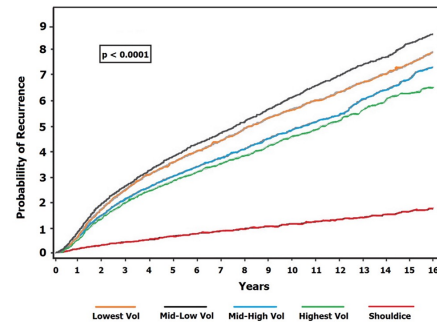
2

3

Proportion of laparoscopic hernias

- Sweden 12%
- UK 12.25%
- Canada 12.5%
- Netherlands 16%
- USA 8%

The importance of the surgeon



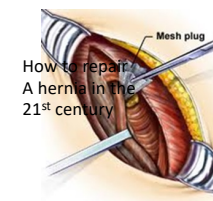
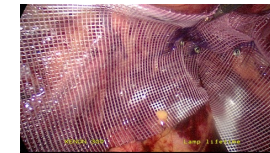
108 HARLEY STREET

	Breast		Skin		Gilmore's Groin & Hernia
	Sports Injury		Vascular		Women's Health
	Rectal		X-Ray & Imaging		Day Surgery

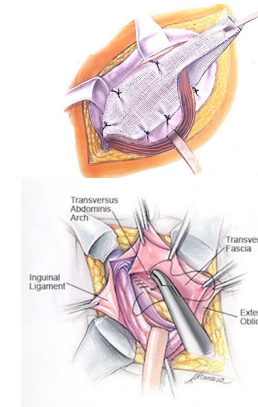
3

4

How to repair A hernia in the 21st century



How to repair A hernia in the 21st century



108 HARLEY STREET

	Breast		Skin		Gilmore's Groin & Hernia
	Sports Injury		Vascular		Women's Health
	Rectal		X-Ray & Imaging		Day Surgery

4