

Thoracic Outlet Syndrome

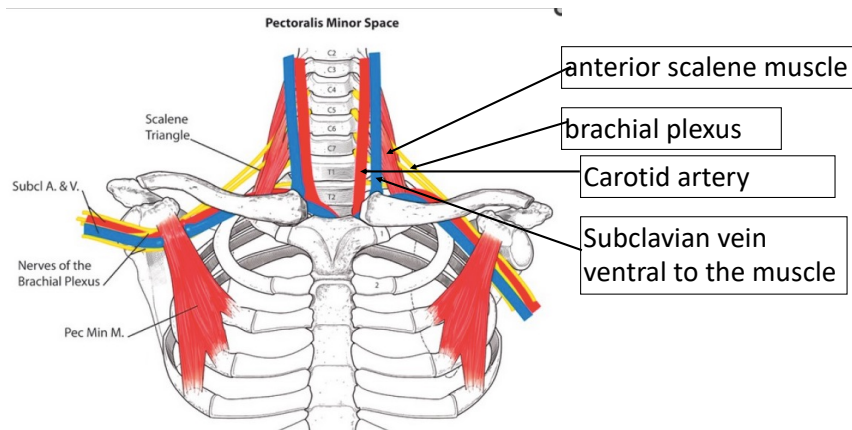
Robert Gerwin MD, FAAN
Associate Professor of Neurology
Johns Hopkins University
Baltimore, MD, USA

1

Thoracic Outlet Syndrome

- Clinical Diagnosis
 - Non-specific symptoms: pain in shoulder, arm, hand
 - Neurologic symptoms: paresthesias, raynaud's phenomenon (sympathetic irritation), weakness

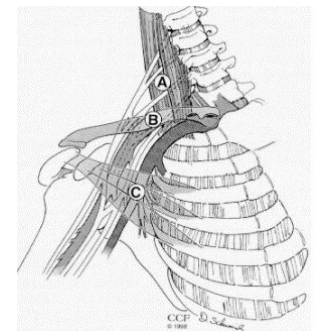
2



3

Thoracic Outlet Syndrome

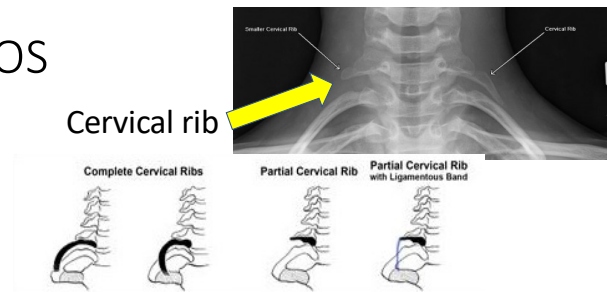
- Thoracic Outlet Syndrome
 - True Neurogenic
 - True Vascular
 - (arterial, venous or both)
 - Traumatic
 - Disputed



A: interscalene compartment
B. Costoclavicular space (thoracic inlet)
C. pectoralis minor hyperabduction syn

4

True Neurogenic TOS



- Rare, unilateral
- Women > Men
- bony abnormality (cervical rib, ligamentous band: tip of cervical rib to 1st rib)
- Lower trunk to T1 anterior primary ramus: stretched over rib or taut band

5

Neurogenic/Myogenic Thoracic Outlet Syndrome: 4 sites of compression

1. interscalene compartment: trigger points in scalene muscles causing nerve entrapment
2. costoclavicular space: first rib elevated by scalene muscles
3. retro-pectoralis minor space (hyperabduction syndrome): entrapment by pectoralis minor*
4. humeral head

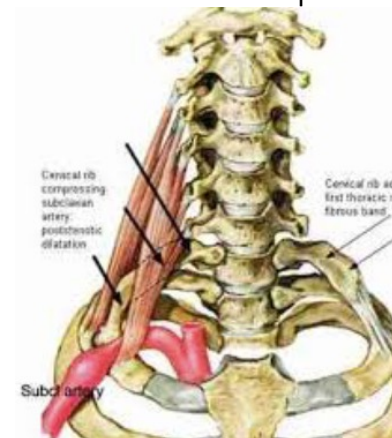
6

Myogenic Thoracic Outlet Syndrome

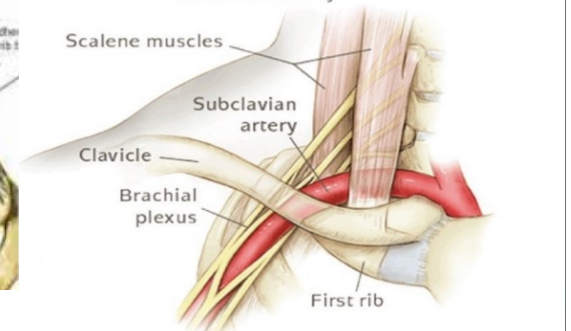
1. Cause of Neurovascular compression
2. Mimicry of TOS

7

Interscalene compartment

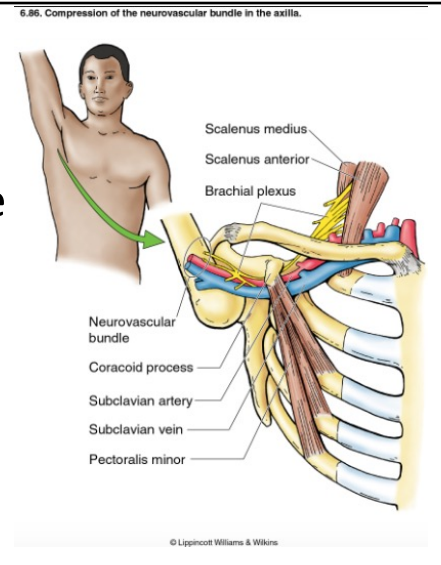


Costoclavicular Syndrome



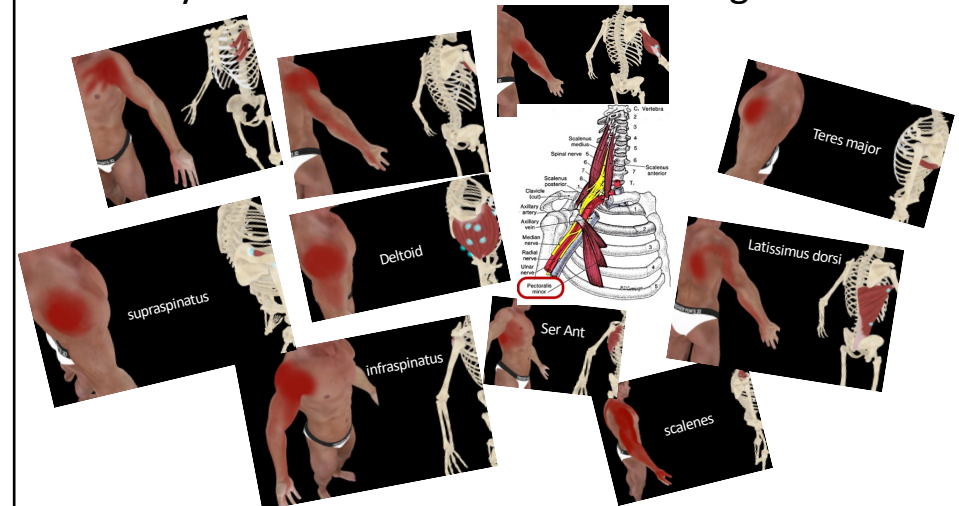
8

Hyperabduction Syndrome



9

Myofascial Referred Pain Mimicking TOS Pain



10

Conclusion I

- True Thoracic Outlet Syndrome:
 - Rare
 - neurologic signs;
 - objective lab abnormalities;
 - anatomic variations:
 - cervical ribs or trauma

11

Conclusion II

- Myogenic thoracic outlet:
 - common
 - trigger points;
 - no neurologic abnormalities;
 - normal lab tests

12